

# HMF 2500-K



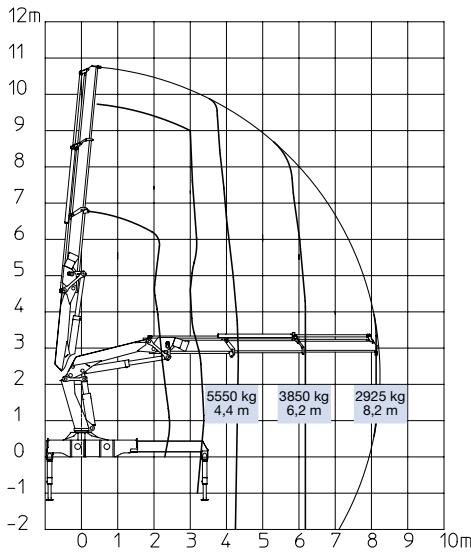
- power to lift.

# HMF Knuckle Boom Loader 2500-K

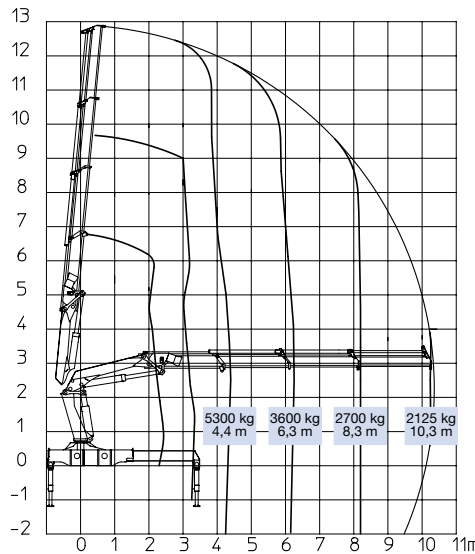
## The HMF 2500 Series – a strong loader in the 25-tm range with up to 8 hydraulic extensions

- The HMF 2500 Series is developed for users who need a high capacity with long reach.
- The 2500-K is a flexible loader, suitable for both hook applications as well as hydraulic accessory applications such as grabs and rotators.
- The dual Power Plus link arm system gives very precise and regular boom movements in the entire working area and is particularly well suited for long reach and handling tall and bulky items.
- Available as standard with HMF's new totally integrated user-friendly RCL Safety System, which only intervenes when absolutely necessary.
- As an optional extra, the 2500-K HMF Series can be specified with 2-stage LMB or EVS safety systems, which allow the operator to concentrate on difficult tasks whilst ensuring the vehicle remains stable.
- Whether the requirement is vertical lifting in high positions or lifting at long reach, the HMF 2500-K Series is the right loader. There are a wide range of product enhancing optional extras for this series, the loader is available with the following: radio remote control, stand-up control, top seat, winch, transport alarm and temperature monitoring.

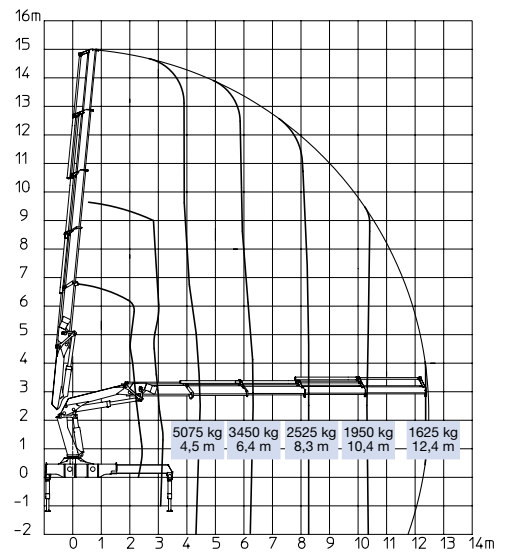
2500-K2



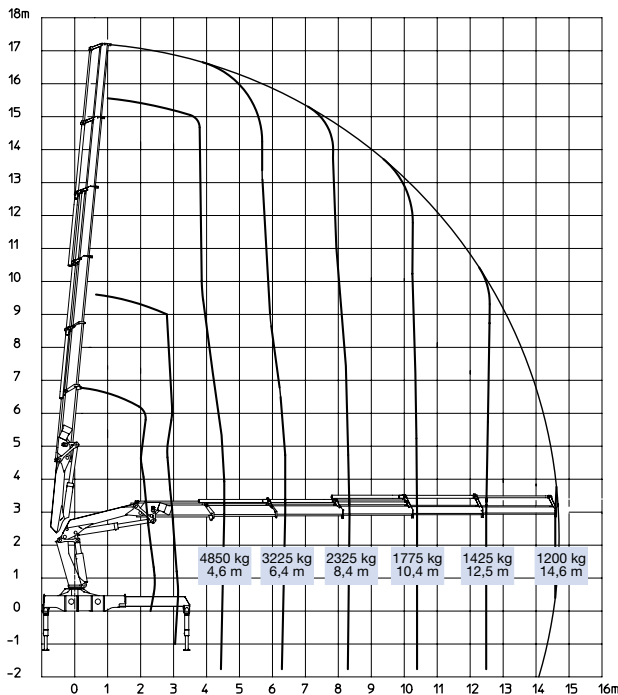
2500-K3



2500-K4



2500-K5

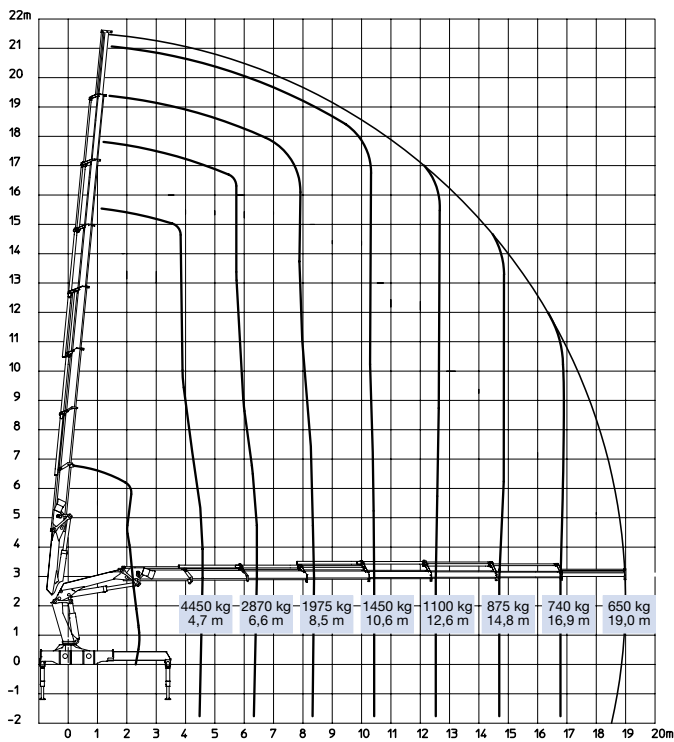


2500-K6

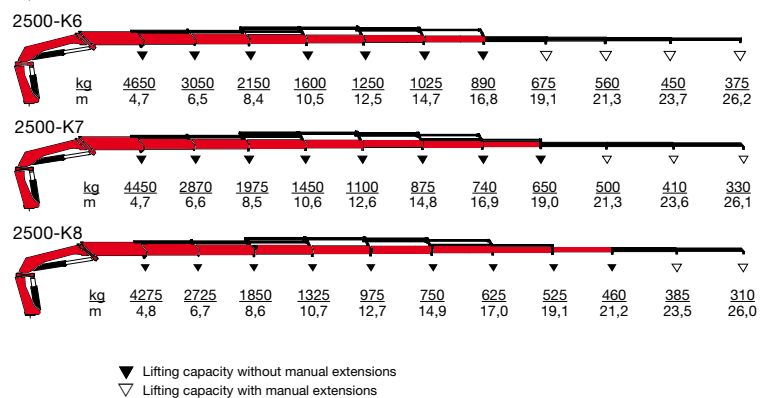
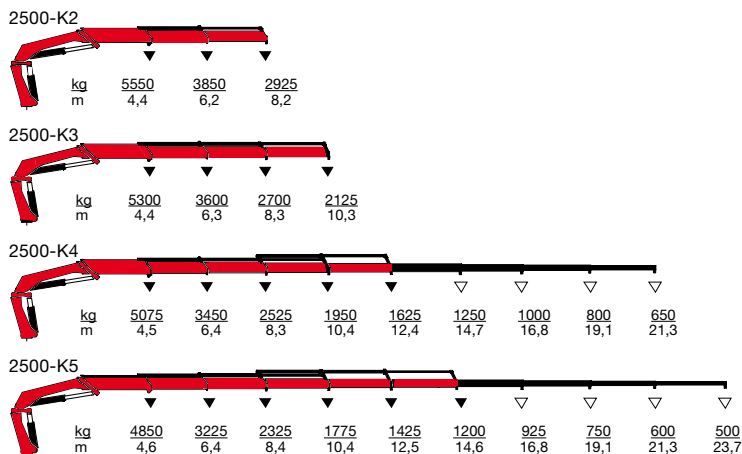
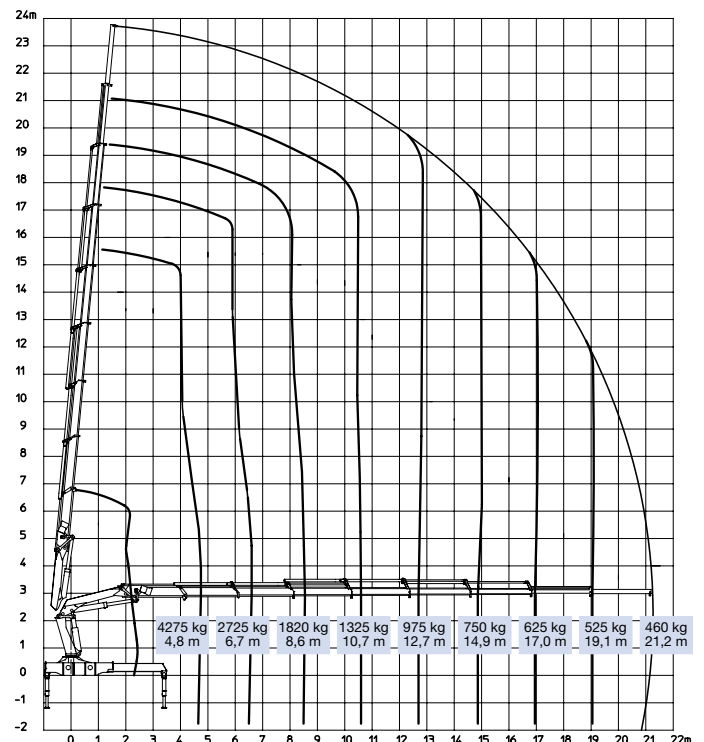


Loading group B3		2500-K2	2500-K3	2500-K4	2500-K5	2500-K6	2500-K7	2500-K8
Load moment	tm	24.4	23.3	22.7	22.3	21.8	21.0	20.5
Hydraulic reach	m	8.3	10.4	12.5	14.7	16.9	19.1	21.2
Slewing torque	kgm	3350	3350	3350	3350	3350	3350	3350
Slewing angle	°	420	420	420	420	420	420	420
Height above chassis	mm	2355	2355	2355	2355	2355	2355	2355
Width, folded	mm	2500	2500	2500	2500	2500	2500	2500
Length of loader, no extra valves	mm	1060	1060	1060	1060	1060	1135	1135
Length of loader, with extra valves	mm	1175	1175	1175	1175	1175	-	-
Stabilizer spread, standard	mm	6200	6200	6200	6200	6200	6200	6200
Weight excl. stabilizers	kg	2630	2850	3060	3260	3450	3600	3725
Weight of stabilizers, standard	kg	475	475	475	475	475	475	475
Working pressure	MPa	28.5	28.5	28.5	28.5	28.5	28.5	28.5
Pump performance	l/min	65	65	65	65	65	65	65
Oil tank capacity, separate tank	l	160	160	200	200	200	200	200
Power consumption	kW	31	31	31	31	31	31	31
Hook height 1 m from column	m	2.6	2.6	2.5	2.4	2.3	2.2	2.2

2500-K7

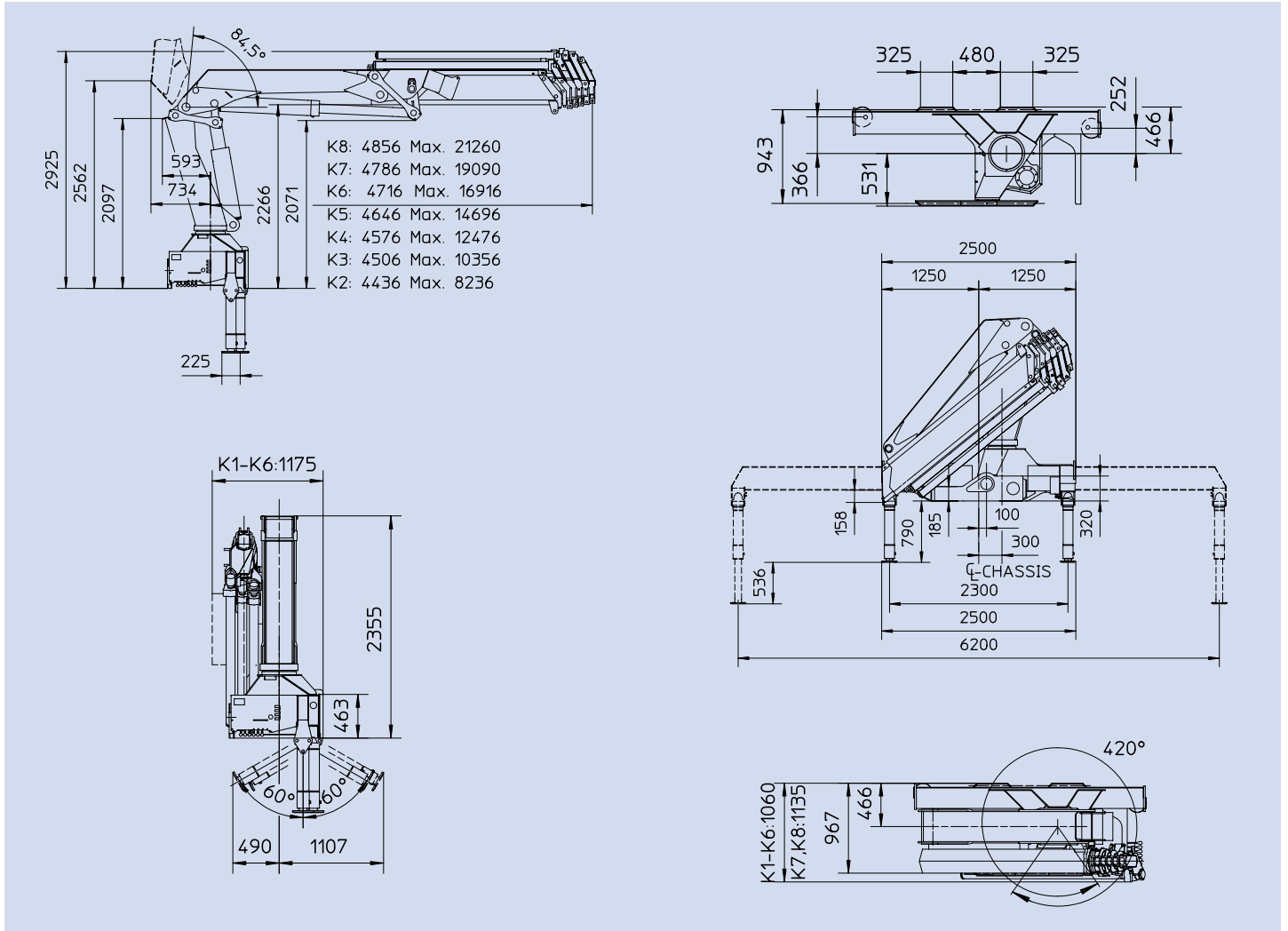


2500-K8



▼ Lifting capacity without manual extensions  
 ▽ Lifting capacity with manual extensions

# HMF Knuckle Boom Loader 2500-K



## HMF makes your workday safer

When choosing an HMF loader you automatically choose maximum safety during loader operation.

At HMF we focus on development and high technology in order to avoid dangerous working situations and to give you the best possible working conditions in connection with your day-to-day lifting tasks.

The recently developed RCL 5300 is a unique electronic loader safety system, which gives you maximum freedom of movement. As an operator working with an RCL 5300 Safety System from HMF, you can be sure of the vehicle's complete utilization of the loader's maximum capacity.

Loader operation becomes more simple, and the user gains easy access to new functions. The new functions in the RCL 5300 are mainly based on feedback on customer requirements as well as HMF's 10 years experience with the RCL 5100 and RCL 5200.



Z008219-1

We reserve the right to introduce improvements and modifications



Højbjerg Maskinfabrik A/S • Oddervej 200 • DK-8270 Højbjerg  
 Tel.: +45 8627 0800 • Fax: +45 8627 0744 • info@hmf.dk

[www.hmf.dk](http://www.hmf.dk)